

1 ■ Black



Name: z
File: z.PES
Stitches: 1128
Size: 0.94x1.72 "

Colors: 1/1
Stops: 0

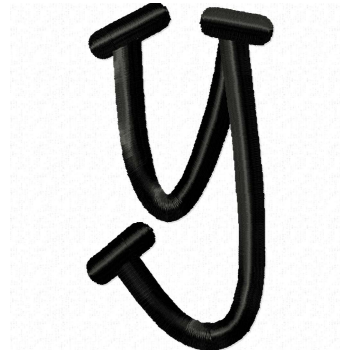
1 ■ Black



Name: Z
File: Z (2).PES
Stitches: 1418
Size: 1.13x2.19 "

Colors: 1/1
Stops: 0

1 ■ Black



Name: y
File: y.PES
Stitches: 1760
Size: 0.98x1.86 "

Colors: 1/1
Stops: 0

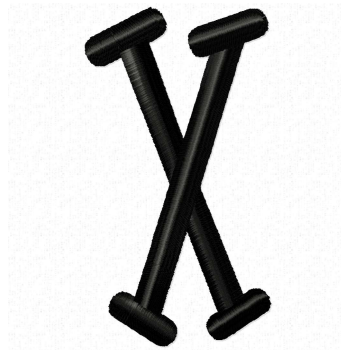
1 ■ Black



Name: Y
File: Y (2).PES
Stitches: 1268
Size: 1.15x2.23 "

Colors: 1/1
Stops: 0

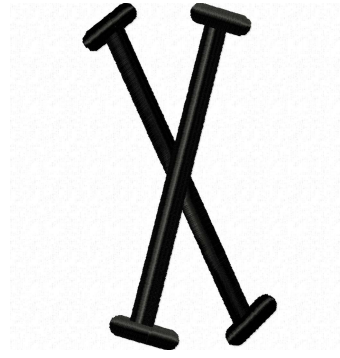
1 ■ Black



Name: x
File: x.PES
Stitches: 1401
Size: 0.95x1.75 "

Colors: 1/1
Stops: 0

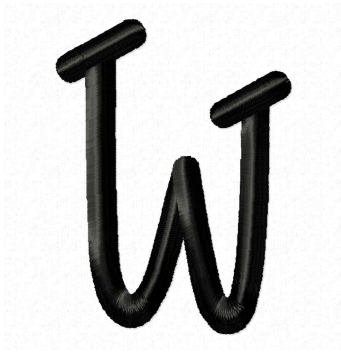
1 ■ Black



Name: X
File: X (2).PES
Stitches: 1730
Size: 1.25x2.26 "

Colors: 1/1
Stops: 0

1 ■ Black



Name: w
File: w.PES
Stitches: 1583
Size: 1.20x1.62 "

Colors: 1/1
Stops: 0

1 ■ Black



Name: W
File: W (2).PES
Stitches: 2170
Size: 1.50x2.23 "

Colors: 1/1
Stops: 0

1 ■ Black



Name: v
File: v.PES
Stitches: 1146
Size: 1.16x1.62 "

Colors: 1/1
Stops: 0

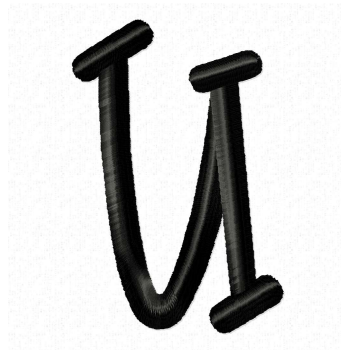
1 ■ Black



Name: V
File: V (2).PES
Stitches: 1422
Size: 1.29x2.20 "

Colors: 1/1
Stops: 0

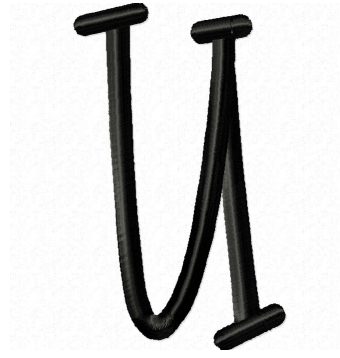
1 ■ Black



Name: u
File: u.PES
Stitches: 1480
Size: 1.08x1.61 "

Colors: 1/1
Stops: 0

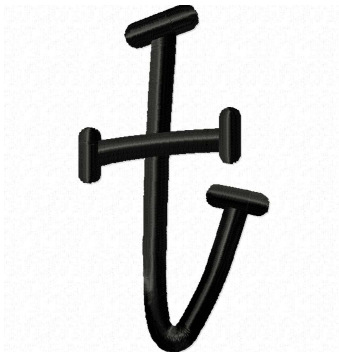
1 ■ Black



Name: U
File: U (2).PES
Stitches: 2058
Size: 1.32x2.20 "

Colors: 1/1
Stops: 0

1 ■ Black



Name: t
File: t.PES
Stitches: 1622
Size: 1.17x2.15 "

Colors: 1/1
Stops: 0

1 ■ Black



Name: T
File: T (2).PES
Stitches: 1137
Size: 1.06x2.17 "

Colors: 1/1
Stops: 0

1 ■ Black



Name: s
File: s.PES
Stitches: 1304
Size: 1.09x1.56 "

Colors: 1/1
Stops: 0

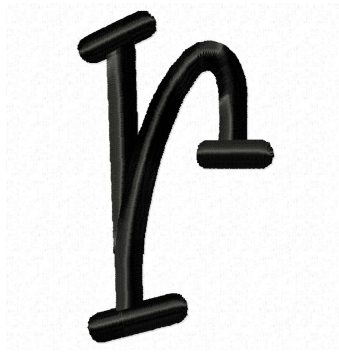
1 ■ Black



Name: S
File: S (2).PES
Stitches: 1803
Size: 1.17x2.12 "

Colors: 1/1
Stops: 0

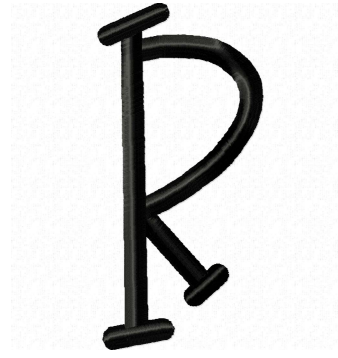
1 ■ Black



Name: r
File: r.PES
Stitches: 1361
Size: 1.00x1.71 "

Colors: 1/1
Stops: 0

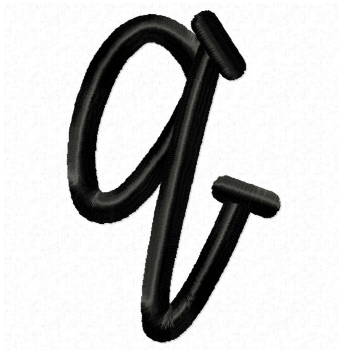
1 ■ Black



Name: R
File: R (2).PES
Stitches: 1770
Size: 1.07x2.27 "

Colors: 1/1
Stops: 0

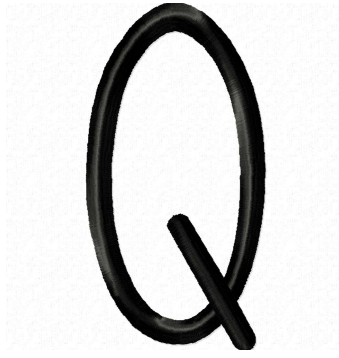
1 ■ Black



Name: q
File: q.PES
Stitches: 1756
Size: 1.09x1.71 "

Colors: 1/1
Stops: 0

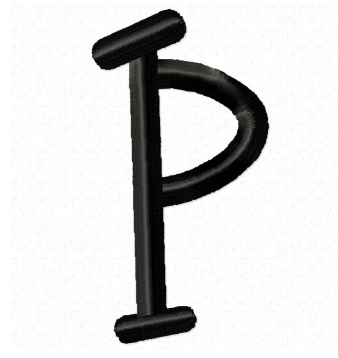
1 ■ Black



Name: Q
File: Q (2).PES
Stitches: 1751
Size: 1.08x2.11 "

Colors: 1/1
Stops: 0

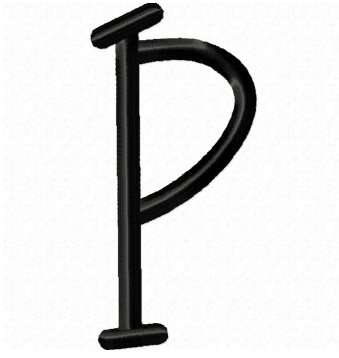
1 ■ Black



Name: p
File: p.PES
Stitches: 1197
Size: 0.91x1.72 "

Colors: 1/1
Stops: 0

1 ■ Black



Name: P
File: P (2).PES
Stitches: 1550
Size: 1.07x2.26 "

Colors: 1/1
Stops: 0

1 ■ Black



Name: o
File: o.PES
Stitches: 1129
Size: 0.77x1.61 "

Colors: 1/1
Stops: 0

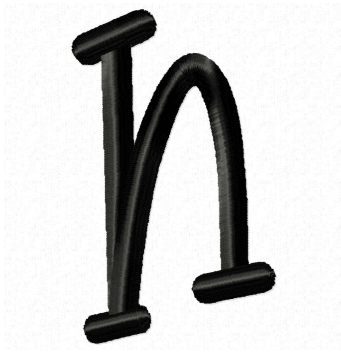
1 ■ Black



Name: O
File: O (2).PES
Stitches: 1463
Size: 1.04x2.09 "

Colors: 1/1
Stops: 0

1 ■ Black



Name: n
File: n.PES
Stitches: 1538
Size: 1.04x1.72 "

Colors: 1/1
Stops: 0

1 ■ Black



Name: N
File: N (2).PES
Stitches: 2049
Size: 1.20x2.24 "

Colors: 1/1
Stops: 0

1 ■ Black



Name: m
File: m.PES
Stitches: 1735
Size: 1.45x1.72 "

Colors: 1/1
Stops: 0

1 ■ Black



Name: M
File: M (2).PES
Stitches: 2190
Size: 1.44x2.15 "

Colors: 1/1
Stops: 0

1 ■ Black



Name: I
File: I.PES
Stitches: 870
Size: 0.51x2.29 "

Colors: 1/1
Stops: 0

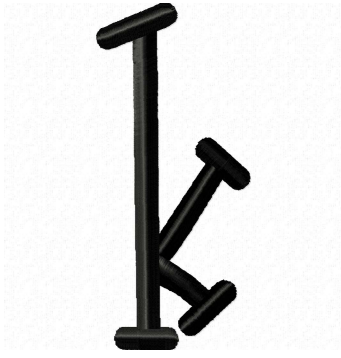
1 ■ Black



Name: L
File: L (2).PES
Stitches: 1025
Size: 0.91x2.16 "

Colors: 1/1
Stops: 0

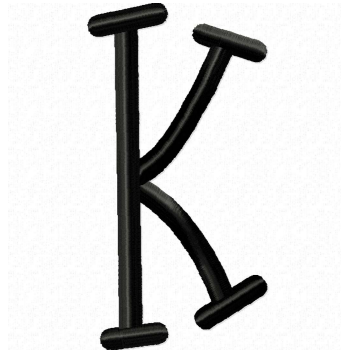
1 ■ Black



Name: k
File: k.PES
Stitches: 1525
Size: 0.99x2.27 "

Colors: 1/1
Stops: 0

1 ■ Black



Name: K
File: K (2).PES
Stitches: 1789
Size: 1.13x2.20 "

Colors: 1/1
Stops: 0

1 ■ Black



Name: j
File: j.PES
Stitches: 1185
Size: 0.87x2.22 "

Colors: 1/1
Stops: 0

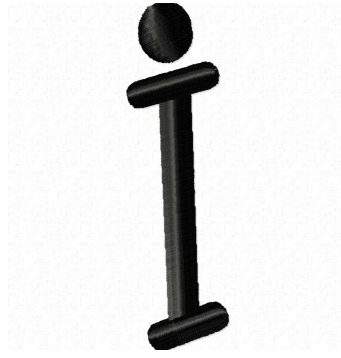
1 ■ Black



Name: J
File: J (2).PES
Stitches: 1256
Size: 0.92x2.11 "

Colors: 1/1
Stops: 0

1 ■ Black



Name: i
File: i.PES
Stitches: 767
Size: 0.54x1.91 "

Colors: 1/1
Stops: 0

1 ■ Black



Name: I
File: I (2).PES
Stitches: 931
Size: 0.61x2.34 "

Colors: 1/1
Stops: 0

1 ■ Black



Name: h
File: h.PES
Stitches: 1806
Size: 1.16x2.35 "

Colors: 1/1
Stops: 0

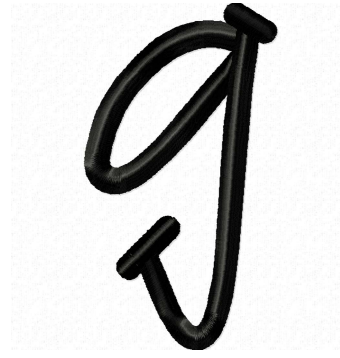
1 ■ Black



Name: H
File: H (2).PES
Stitches: 1904
Size: 1.23x2.24 "

Colors: 1/1
Stops: 0

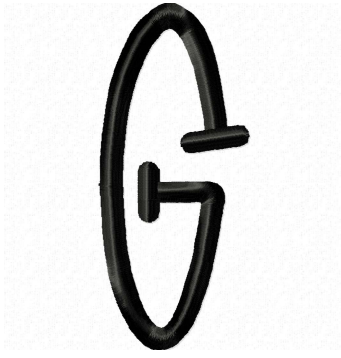
1 ■ Black



Name: g
File: g.PES
Stitches: 1890
Size: 1.17x2.12 "

Colors: 1/1
Stops: 0

1 ■ Black



Name: G
File: G (2).PES
Stitches: 1695
Size: 0.93x2.17 "

Colors: 1/1
Stops: 0

1 ■ Black



Name: f
File: f.PES
Stitches: 1328
Size: 1.04x2.17 "

Colors: 1/1
Stops: 0

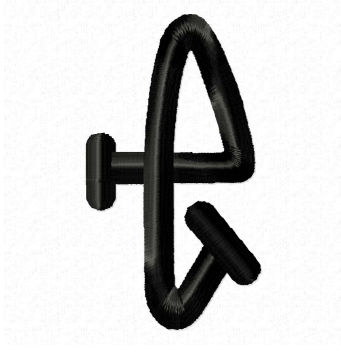
1 ■ Black



Name: F
File: F (2).PES
Stitches: 1213
Size: 0.98x2.19 "

Colors: 1/1
Stops: 0

1 ■ Black



Name: e
File: e.PES
Stitches: 1348
Size: 0.90x1.63 "

Colors: 1/1
Stops: 0

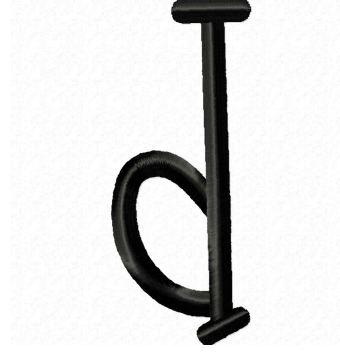
1 ■ Black



Name: E
File: E (2).PES
Stitches: 1310
Size: 0.80x2.24 "

Colors: 1/1
Stops: 0

1 ■ Black



Name: d
File: d.PES
Stitches: 1461
Size: 0.89x2.24 "

Colors: 1/1
Stops: 0

1 ■ Black



Name: D
File: D (2).PES
Stitches: 1577
Size: 0.91x2.19 "

Colors: 1/1
Stops: 0

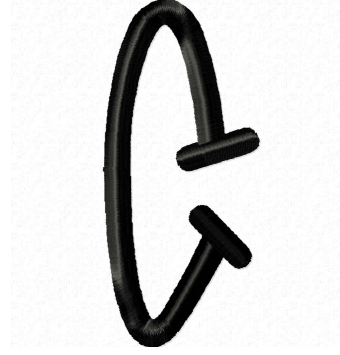
1 ■ Black



Name: c
File: c.PES
Stitches: 1131
Size: 0.75x1.63 "

Colors: 1/1
Stops: 0

1 ■ Black



Name: C
File: C (2).PES
Stitches: 1397
Size: 0.87x1.96 "

Colors: 1/1
Stops: 0

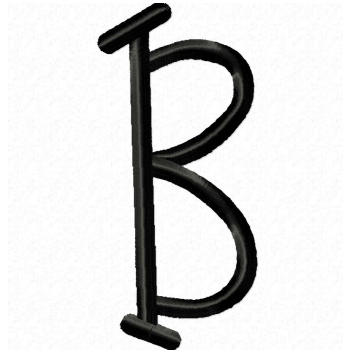
1 ■ Black



Name: b
File: b.PES
Stitches: 1624
Size: 1.06x2.32 "

Colors: 1/1
Stops: 0

1 ■ Black



Name: B
File: B (2).PES
Stitches: 1915
Size: 1.03x2.26 "

Colors: 1/1
Stops: 0

1 ■ Black



Name: a
File: a.PES
Stitches: 1561
Size: 1.02x1.72 "

Colors: 1/1
Stops: 0

1 ■ Black



Name: A
File: A (2).PES
Stitches: 1666
Size: 1.02x2.20 "

Colors: 1/1
Stops: 0

1 ■ Black



Name: 9
File: 9.PES
Stitches: 1291
Size: 0.88x1.95 "

Colors: 1/1
Stops: 0

1 ■ Black



Name: 8
File: 8.PES
Stitches: 1429
Size: 0.69x1.86 "

Colors: 1/1
Stops: 0

1 ■ Black



Name: 7
File: 7.PES
Stitches: 984
Size: 0.80x2.02 "

Colors: 1/1
Stops: 0

1 ■ Black



Name: 6
File: 6.PES
Stitches: 1371
Size: 0.75x1.96 "

Colors: 1/1
Stops: 0

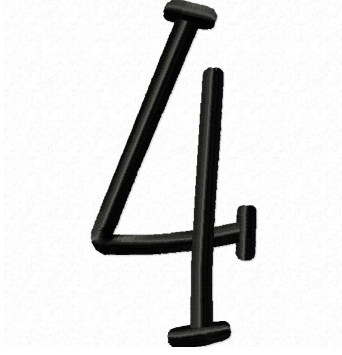
1 ■ Black



Name: 5
File: 5.PES
Stitches: 1455
Size: 0.98x1.89 "

Colors: 1/1
Stops: 0

1 ■ Black



Name: 4
File: 4.PES
Stitches: 1447
Size: 0.96x2.04 "

Colors: 1/1
Stops: 0

1 ■ Black



Name: 3
File: 3.PES
Stitches: 1341
Size: 0.96x1.79 "

Colors: 1/1
Stops: 0

1 ■ Black



Name: 2
File: 2.PES
Stitches: 1198
Size: 0.76x1.86 "

Colors: 1/1
Stops: 0

1 ■ Black



1 ■ Black



Name: 1
File: 1.PES
Stitches: 1237
Size: 0.94x2.00 "

Colors: 1/1
Stops: 0

Name: 0
File: 0.PES
Stitches: 1177
Size: 0.63x1.85 "

Colors: 1/1
Stops: 0